



Year 1

Meet the teacher meeting

Staff in Year 1

In Bonsai class:

Mrs Kersey

Miss White

In Birch class:

Mrs Heard

Mrs Petchey

Mrs Little

Uniform

Key Stage 1 (Years 1 & 2)

- White polo shirts
- Red sweatshirts/pullovers, fleeces or cardigans
- Plain black school trousers/shorts or black skirts/pinafore dresses
- Black school shoes
- Red gingham dresses in the summer
- PLEASE ENSURE ALL UNIFORM IS NAMED



PE Kit

At Lawford Mead, PE Kit consists of:

- White t-shirt
- Black shorts
- Trainers
- (Plain tracksuits in the colder months).

We do not recommend plimsolls for PE as they do not provide enough support for the range of physical activities children participate in.

For Muddy Adventures, children must wear long sleeve tops that completely cover the arms, trousers that cover the whole leg, and wellington boots or ankle-high walking boots.

PE

Your child's PE lessons will be on Tuesday afternoons for the first half term. This day will change with each half term and children will be notified because we will be adding in muddy adventures and we will inform you of this. Please ensure PE kits are in at all times.

If your child does a club with Miss Lindsey, they should bring in a separate kit. They can wear their PE trainers for this.

All children **MUST** have a water bottle, especially on PE days.

Upcoming topics

Autumn 1	Superheroes
Autumn 2	Memory box
Spring 1	Splendid skies
Spring 2	Paws, claws and whiskers
Summer 1	Bright lights, big city
Summer 2	Enchanted woodland

Maths

Autumn	Geometry – 2D and 3D shapes Place Value within 10 Addition/subtraction within 10
Spring	Place value within 20 Addition and subtraction within 20 Place value within 50 Length and height Mass and volume
Summer	Introduction to multiplication and division Fractions Geometry – position and direction Money Time

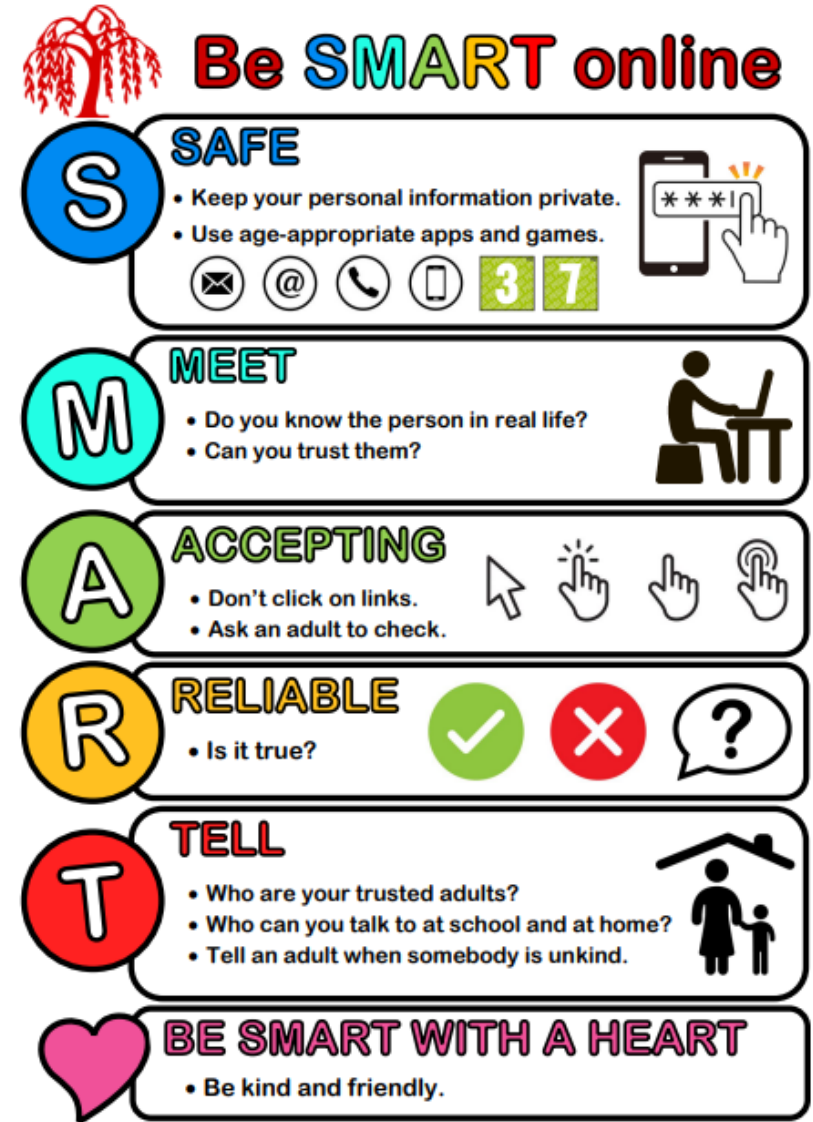
Cyber- Safety

- S for Safe
- M for Meet
- A for Accepting
- R for Reliable
- T for Tell

We follow the SMART rules at Lawford Mead.
Please explore the following links to see how
we ensure a safe online environment in school:

<http://www.kidsmart.org.uk/teachers/lessonplans.aspx>

<https://www.saferinternet.org.uk/safer-internet-day/2023>



Remember, you can visit www.childline.org.uk or call 0800 1111 in an emergency.

Homework

- **Year 1 homework consists of reading and spellings.**
- **Children should read to an adult every day using their school reading book or a book at home. This can be recoded in their reading diaries.**
- **Your child's homework will be stuck into their homework book every Friday. These books need to come back to school by Thursday.**

ELS

- **Essential letters and Sounds is a phonics scheme that supports your child's early reading and phonics skills.**
- **Your child may bring home a decodable book matched to their level and/or to the teaching sequence taking place each day at school. They will bring a new book home each Friday and will have already had teacher support in reading all or some of the book.**

ELS

- **Expectations are for your child to read this book at least 4 times a week as reading repeated and familiar texts helps build their decoding and fluency skills.**
- **Your child will also bring a book home that is not currently decodable for them but for you to share together.**
- **Please record in your child's reading record each time you read together and send their reading record in to school each day.**

Things you can do to help your child...

- Read every night and record in their Reading Record
- Spelling homework
- Share learning and work on Seesaw